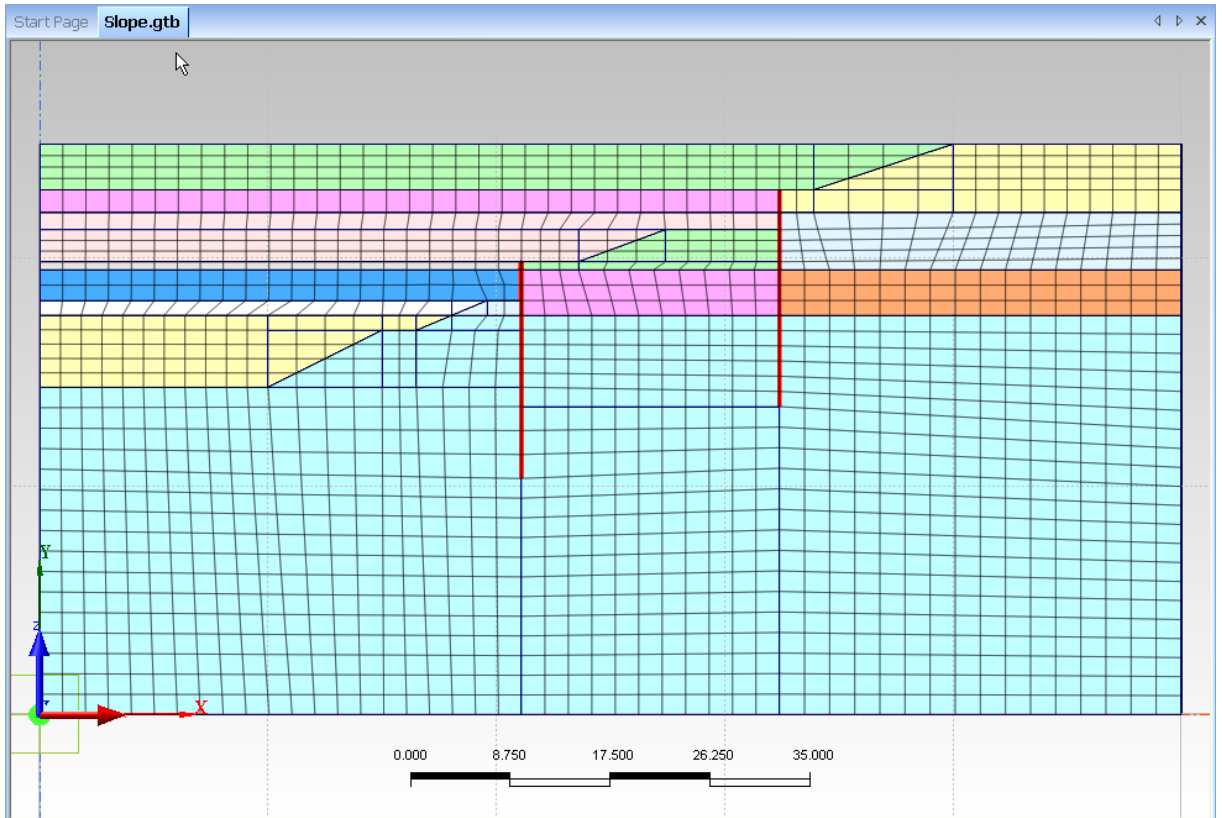


Q

## 網格重新群組及 3D網格extract板元素功能

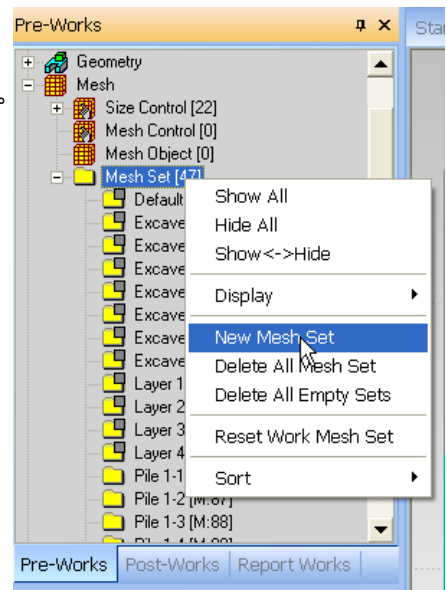
A

將匡選部分的網格分離出來。

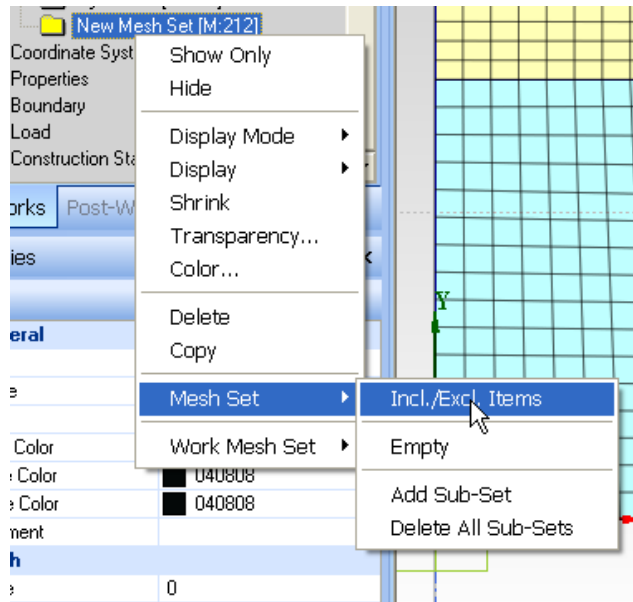


依照右圖至Pre-Works

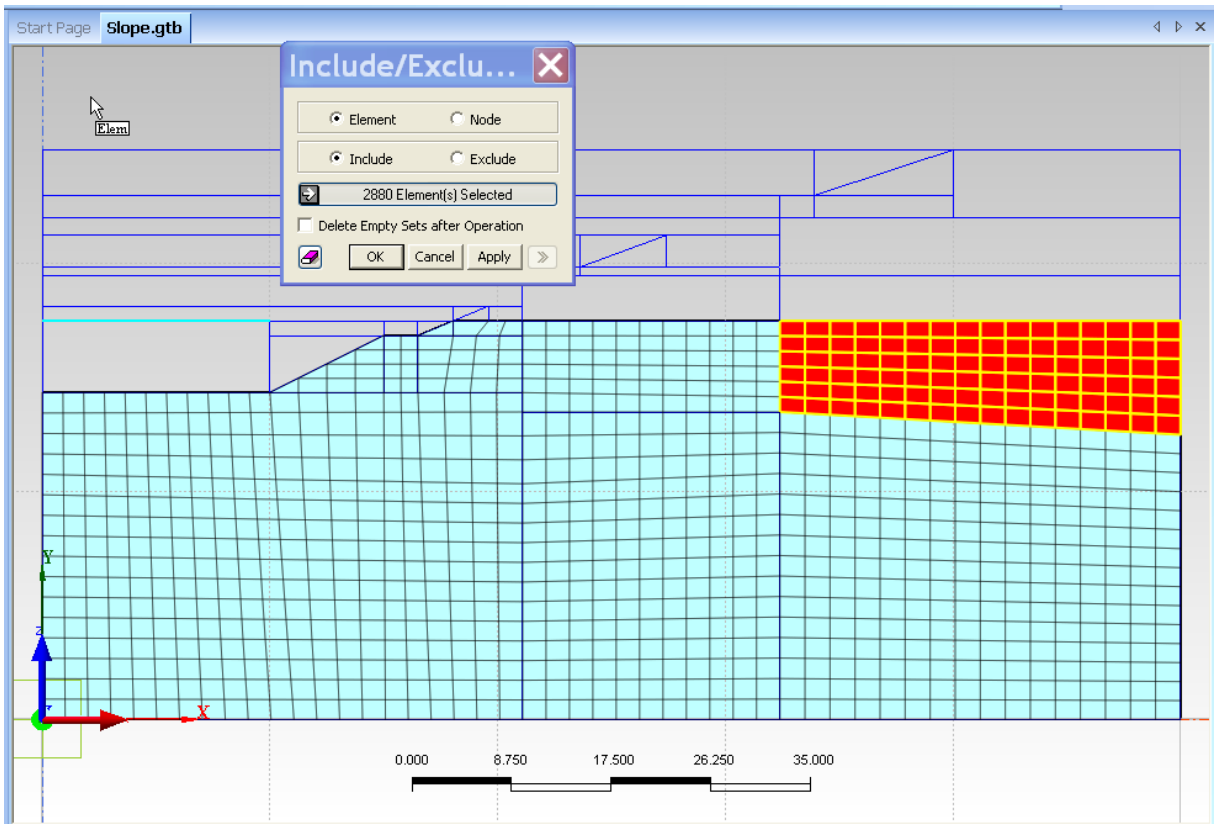
右鍵點Mesh Set並選New Mesh Set。



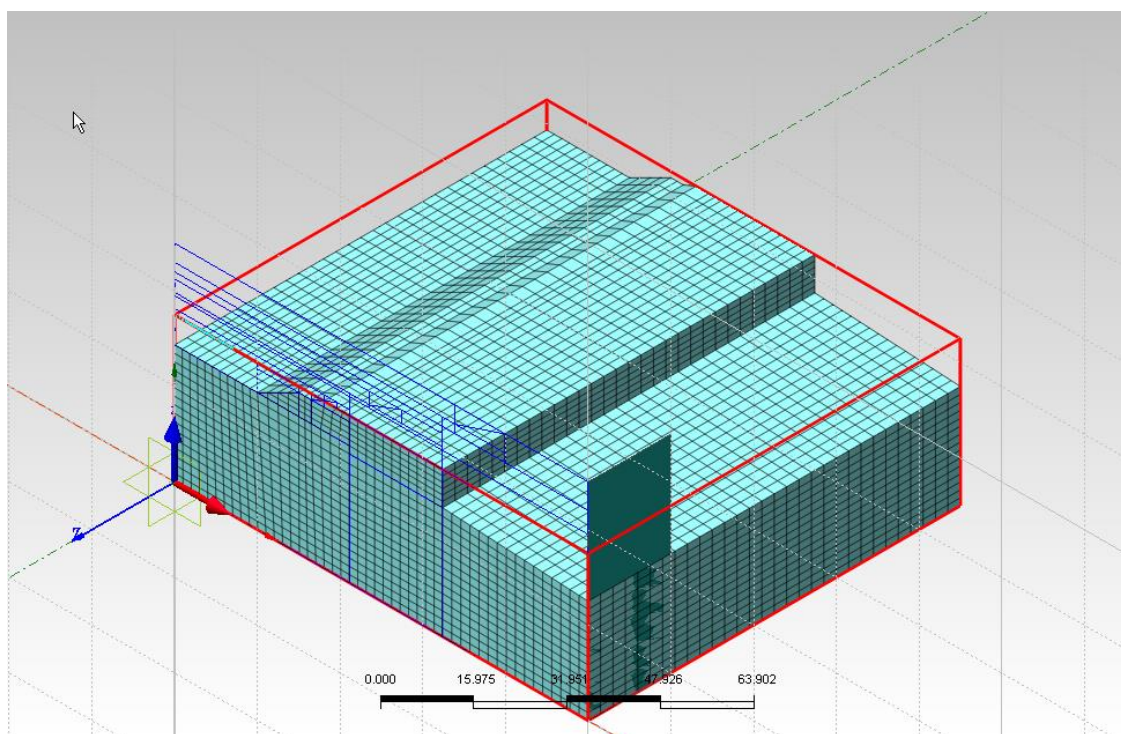
依照下圖至Pre-Works，右鍵點New Mesh Set並選Mesh Set > Incl. Item。



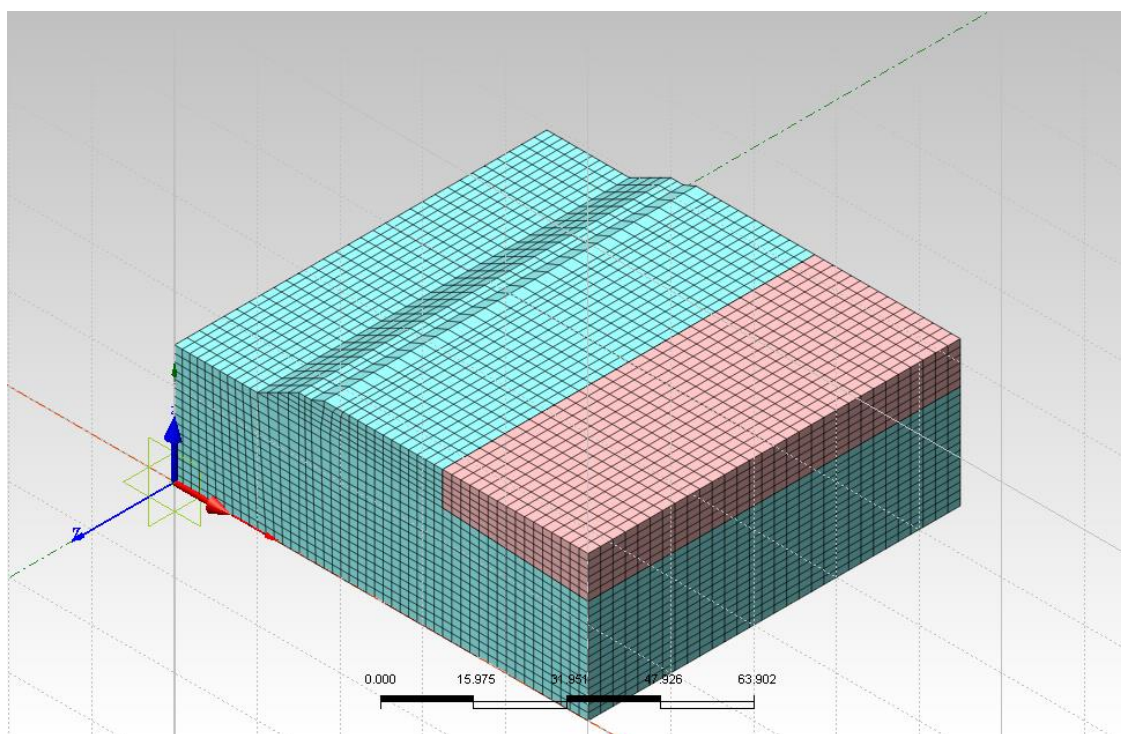
選擇欲重新分組的網格。



## 群組前網格



## 群組後網格



### 選擇節點及元素析取單元生成板樁

## Extract Element

From Shape  
 Edge  Face

Select Face(s)

Skip Duplicated Faces

From Nodes

Type

1D Element from Free-Edge  
 2D Element from Free-Face

434 Node(s) Selected

390 Target Elements Selected

Orientation

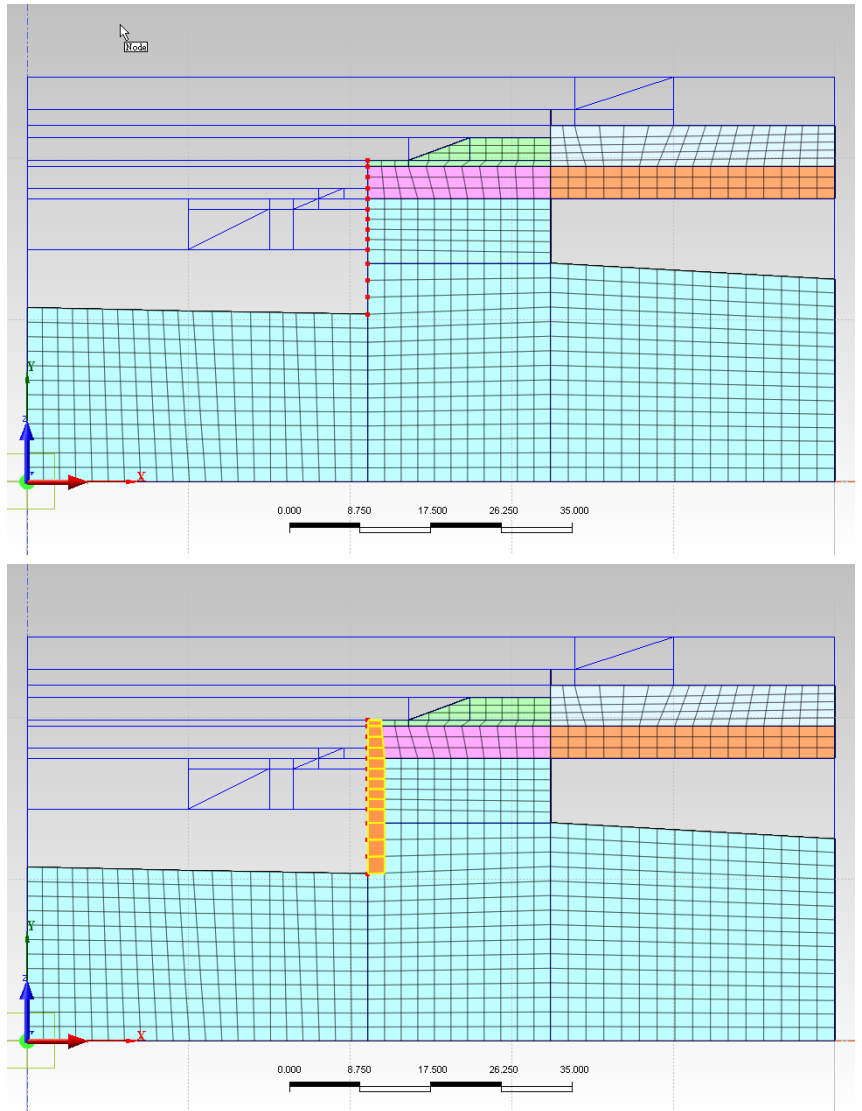
Attribute  
6 6: Barrier

Mesh Set  
 As Sub-Set pile1  
Add to Mesh Set

Register Based-on Object Shape  
 Register Based-on Owner Shape  
 Register Based-on Owner Mesh Set

Separate a Parabolic Tria into Linear Trias

OK Cancel Apply



以同樣方式extract出板樁

